



## SPECIFICATIONS

|   |   |
|---|---|
| <b>Tank Depth measurement:</b>                    | Minimum depth: 0.5m.<br>Maximum depth: 3m.  |
| <b>Display:</b>                                   | Bar graph level display, 10% tank height per bar.<br>Early warning indication (flashing tank fill) at a predetermined height above tank bottom (see section 11). Tank empty warning flashes red LED at a predetermined height from tank bottom. (see section 11) Meets EN60335. |
| <b>Max communication distance:</b>                | 200m in normal "line of sight" conditions.<br>The effective range of this product can be influenced by external sources that may reduce the range of the transmitter or sensitivity of the receiver.  |
| <b>Power supply:</b>                              | Receiver: 150-250V, 50-60HZ.<br>Transmitter: 3-voltlithium cell.  |
| <b>Battery life:</b>                              | 3 years (estimated life).   |
| <b>Wireless com:</b>                              | 433 MHz. FM transmission.<br>EN 300-220, FCC part 15.   |
| <b>Dimensions:</b>                                | Receiver: 50 x 55 x 35mm (not including aerial).<br>Transmitter: 70x93mm.   |
| <b>Max and min operating temp. (transmitter):</b> | Operating temp. Range -10° to +60 ° C.<br>Operating humidity: 0-100%.<br>Sealed airtight unit made from PP3317 UV stabilized.   |
| <b>Hole size for tank fitting:</b>                | 32mm<br>2" BSP external thread adaptor  |

**Declaration:** this apparatus is designed to: Not give rise to physical injury or other harm due to contact. Not to produce excessive surface temperatures, infrared, electromagnetic, ionising radiation. To have no non-electrical dangers. When used in accordance with these user and installation instructions.

**Warning:** If the equipment is likely to come in to contact with aggressive substances, then it is the responsibility of the user to take suitable precautions that prevent it from being adversely affected, thus ensuring that the type of protection is not compromised. Aggressive substances; - e.g. liquids or gases that may attack metals, or solvents that may affect polymeric materials.

In order to minimize the risks of electric shock,

-  The receiver is for indoor use only, never use outdoors.
-  The receiver is a sealed unit; do not attempt to open it.

Supplied by Kingspan Environmental  
180 Gilford Road, Portadown, Co. Armagh, Northern Ireland

**Safety Information**  
Do not replace in a potentially explosive atmosphere  
Periodically check that the unit is intact and securely fastened to the tank.  
Check with the manufacturer on the chemical compatibility prior to use.  
Do not attempt to repair this equipment. It must be returned to the manufacturer for repair.  
Warning! Electrostatic hazard! Clean only with damp cloth.  
Use only VARTA CR2430 batteries.  
Not suitable for pressurised containers. Use on tanks vented to atmosphere.

Warranty: 1 year.

**FOR SUPPORT CONTACT:**  
sales@sensor-systems.com

© Kingspan Environmental 01-10-2008 TMG

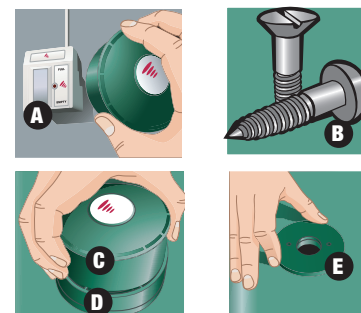
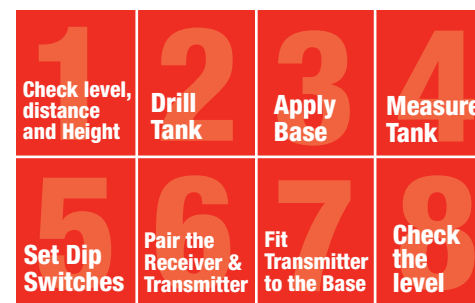


## INSTALLATION INSTRUCTIONS



This product is to be used only on domestic oil tanks within the parameters outlined in the specifications. Any use of the product on applications that lie outside a domestic environment is done so at users own risk.

### READ FULLY BEFORE INSTALLATION AND USE



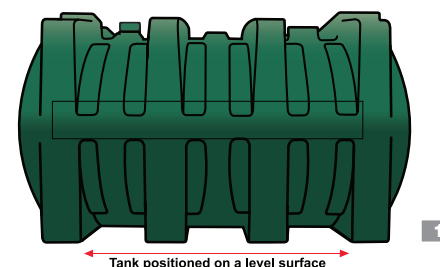
**A RECEIVER B SCREWS C WATCHMAN SONIC TRANSMITTER  
D WATCHMAN SONIC BASE E WEATHER SEAL**

### 1 CHECK LEVEL, DISTANCE AND HEIGHT

Suitable for use in tanks for the storage of diesel fuel, kerosene, and gas oil types A2, C1, C2 and D as defined by BS 2869. Check with the manufacturer and/or supplier before using with any other fluids.

Ensure before you start your install that the tank the WatchmanSonic is to be fitted to is:

1. Level (See Picture 1)
2. Within a 200-metre range of the line of sight of receiver position.
3. A maximum height of 3 meters



### 2 TANK PREPARATION

Please note- it is important to keep all items dry during installation.

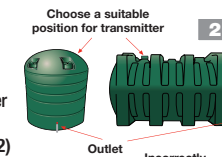
#### A) PRE-DRILLED TANKS.

There may already be a 32mm pre-drilled opening in the tank top and possibly a tube fitted. If so, remove the cover by undoing the two screws holding it in place, and dispose of the tube in accordance with local government guidelines.

**NB – Ensure the hole is a minimum DIAMETER 30mm.**

#### B) UN-DRILLED TANKS.

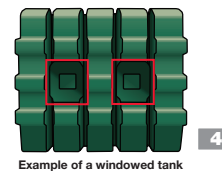
Where drilling is required to fit the transmitter, choose a flat level point that is at the same level and no higher than any opening at the top of the tank (filling point etc.). (See Picture 2)



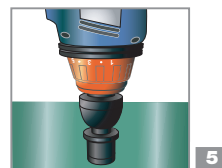
The Transmitter can't sit at an angle as this gives an incorrect level reading on the receiver. Take care not to choose an area on which water could gather i.e. a dent/depression or a position directly above any restricted area inside the tank. (See Picture 3)



**NB:** For Windowed Tanks ensure that the WatchmanSonic is not positioned above the area of the WINDOW. If the WatchmanSonic is positioned over the WINDOWED area it transmits faulty readings to the receiver. (See Picture 4)



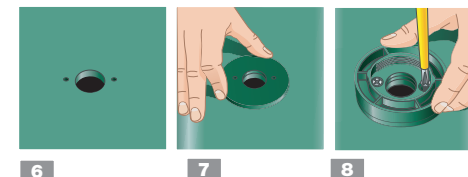
Drill a hole in the place that you have selected on the tank's top surface using a 32mm hole-saw. (shown in Picture 5)



### 3 FITTING TRANSMITTER BASE

For tanks with pre-drilled holes

- Remove cap from the hole (Picture 6) and insert transmitter base, ensuring the weather seal is securely in place (Picture 7 & 8).
- Tighten the WatchmanSonic base (Part D) on to the tank with 2 stainless steel self-tapping, counter sunkscrews supplied (Part B). Do not over tighten!



Visit our website [www.sensor-systems.com](http://www.sensor-systems.com)



Commercial Fuel Solutions Ltd  
Unit 22, Badgers Way  
Buckingham MK18 7EQ

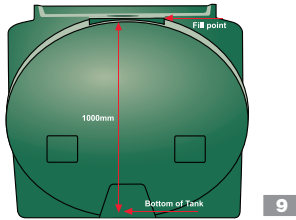
Sales Hotline: +44 (0) 845 688 9755  
Watchman Helpline: +44 (0) 28 3836 4414  
Fax: +44 (0) 845 688 9744  
sales@commercialfuelsolutions.co.uk



SENSOR IS PART OF KINGSKAN ENVIRONMENTAL

#### 4 DEFINE THE TANK HEIGHT

- Accurately measure the height of your tank. Maximum tank height 3 Metres from the base of your tank to the position of the WatchmanSonic (which should be the same as the fill point).
- This measurement is from the base of your tank to the WatchmanSonic (which should be the same as the fill point). (Seen in Picture 9)



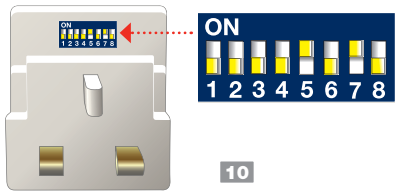
9

#### 5 SETTING THE SWITCHES ON THE RECEIVER

Using the tank height chart (see section 11), read across to the relevant multi switch settings. The multi switches are located in a recess at the back of the receiver above the pins.

Using a screwdriver or tip of a ballpoint pen, flip the relevant switch (e.g.) upwards (= ON). As an example, if the tank is 100 cm high, set switches 5 & 7 ON (Up). (See Picture 10)

**NOTE:** Switches 1 & 2 are factory set switches and are no relevance to the end user. If you wish to set the audible ring feature the DIP1 needs to be moved up.

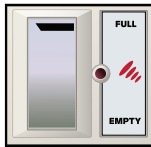


10

#### 6 MATCHING RECEIVER AND TRANSMITTER

You should match the receiver (Part A) with the transmitter (Part C) so that the system code is unique to your tank. You only need to do this once. Plug receiver into a suitable and convenient electrical socket and switch on.

The display screen (Picture 11) on the front of the receiver will show a flashing top bar as shown in diagram. This indicates that the receiver is waiting for the unique code. The bar will continue to flash for 2 minutes during which time you can match the transmitter to the receiver.



11

Hold the transmitter against the receiver right hand side, as shown (Picture 12), so that the black dot on the transmitter is touching the black dot on the receiver (important!) for about 20 seconds to allow unique code to be transferred. Bars will increase up the display screen. When all 10 bars are shown they will flash to indicate that the unique code is transferred.



12

The receiver will wait for a code for 2 minutes when plugged in.

If you should want to change the height, just unplug the receiver, change the dip switches and plug it back in.

If you are installing more than one WatchmanSonic unit please wait 9 minutes between each matching.

In the event of a power failure or if the receiver is switched off or moved to a new socket: When power returns again or unit is switched on, the receiver display screen will show the top bar flashing. There is no need to repeat the matching instruction.

The top bar will continue to flash for 2 minutes, after which time the last valid signal is displayed. It may take up to two hours for the next transmission from the transmitter.

#### 7 FITTING THE TRANSMITTER TO THE BASE

Screw the transmitter (Part C) into the base (Part D). Ensure the transmitter is vertical on top of the tank and level.

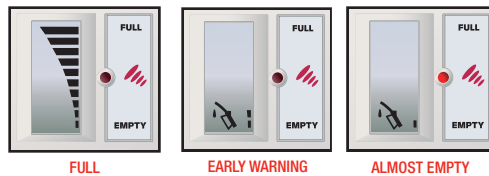
Ensure that the WatchmanSonic unit is screwed correctly into the base and that the threads have not crossed, to give a secure seal. (See Picture 13)



13

#### 8 CHECK THE LEVEL OF OIL IN THE TANK

The bar graph represents the level of oil in your tank.



**Note: It can take up to 2 hours for the first accurate reading from the WatchmanSonic to be displayed.**

#### 9 TROUBLESHOOTING

##### CHANGING BATTERY

Though the lithium battery will have a very long service life, it will eventually become exhausted and will need replacing.

Batteries can be purchased from a good photographic shop or chemist. The battery model is: VARTA CR2430.

- Remove transmitter from tank
- Take transmitter indoors, into a clean dry environment
- Using a cross point screwdriver, undo the four screws, located under the main body of transmitter
- Remove the top cover

- Flip out battery
- Clip in new battery
- Re-fit cover
- Evenly tighten all four screws - do not over tighten
- Replace transmitter on the tank

If the receiver detects a low battery the following warning message is displayed on the LCD. The level of oil in the tank plus a constantly flashing warning triangle. (Shown in picture 14)

If the receiver detects a transmission not heard for a long time the following message is displayed on the LCD. Constantly flashing warning triangle. This starts approximately 12 hours from the last received good signal. (Shown in picture 15)

If the receiver detects a connection fault the following message is displayed on the LCD. Warning triangle constantly flashing plus indication bar 5 on. (Shown in picture 16)



LOW BATTERY 14



TRANSMISSION NOT HEARD 15



CONNECTION FAULT 16

#### 10 GUARANTEE

The Watchmansonic has a warranty period of 1 year. For each product accepted by Kingspan Environmental as warrantable, Kingspan Environmental will rework or replace the product and return to the customer at Kingspan Environmental expense. The warranty becomes invalid if the sealed unit is opened (Part C).

Kingspan Environmental will not warrant products that have been:

- Used outside the functional and environmental conditions for which they were designed.
- Physically abused, incorrectly handled/ installed or damaged in transit.
- Despatched from Kingspan Environmental more than 1 year previously.
- Returned to Kingspan Environmental in a form other than in which they were originally supplied.
- Subjects to "Act of God", e.g.: lightning strike, flood or any other catastrophic event beyond Kingspan Environmentals control.

Any Sensor product deemed damaged by the customer shall be returned to Kingspan Environmentals facility at the customer's expense.

Kingspan Environmental shall not be liable for any costs in relation to the returned products.

The purchase invoice and a description issue should be joined with the faulty product. The product should be returned at your shop or directly at the following address:

**Kingspan Environmental, Sensor Systems team, 180 Gifford Road, Portadown, Co. Armagh, Northern Ireland BT63 5LE.**

Each faulty product must receive Kingspan Environmentals After-Sale-Service approval before being returned.

#### 11 WATCHMANSONIC RECEIVER MULTI SWITCH SETTING CHART

Measure the vertical height of the tank from the transmitter position on top of the tank to the bottom of the tank. Read to the nearest measurement on the chart. Ignore dip-switches 1 & 2. Unless see NOTE under point 5.

| Tank Height (cms) | DIP 3 | DIP4 | DIP5 | DIP6 | DIP7 | DIP8 |
|-------------------|-------|------|------|------|------|------|
| 50                |       |      |      |      |      | ON   |
| 55                |       |      |      |      | ON   | ON   |
| 60                |       |      |      |      | ON   | ON   |
| 65                |       |      |      |      | ON   | ON   |
| 70                |       |      |      | ON   |      | ON   |
| 75                |       |      | ON   | ON   |      | ON   |
| 80                |       |      | ON   | ON   | ON   | ON   |
| 85                |       |      | ON   | ON   | ON   | ON   |
| 90                |       |      | ON   | ON   | ON   | ON   |
| 95                |       |      | ON   | ON   | ON   | ON   |
| 100               |       |      | ON   | ON   | ON   | ON   |
| 105               |       |      | ON   | ON   | ON   | ON   |
| 110               |       |      | ON   | ON   | ON   | ON   |
| 115               |       |      | ON   | ON   | ON   | ON   |
| 120               |       |      | ON   | ON   | ON   | ON   |
| 125               |       |      | ON   | ON   | ON   | ON   |
| 130               |       | ON   | ON   | ON   | ON   | ON   |
| 135               |       | ON   | ON   | ON   | ON   | ON   |
| 140               |       | ON   | ON   | ON   | ON   | ON   |
| 145               |       | ON   | ON   | ON   | ON   | ON   |
| 150               |       | ON   | ON   | ON   | ON   | ON   |
| 155               |       | ON   | ON   | ON   | ON   | ON   |
| 160               |       | ON   | ON   | ON   | ON   | ON   |
| 165               |       | ON   | ON   | ON   | ON   | ON   |
| 170               |       | ON   | ON   | ON   | ON   | ON   |
| 175               |       | ON   | ON   | ON   | ON   | ON   |
| 180               |       | ON   | ON   | ON   | ON   | ON   |
| 185               |       | ON   | ON   | ON   | ON   | ON   |
| 190               |       | ON   | ON   | ON   | ON   | ON   |
| 195               |       | ON   | ON   | ON   | ON   | ON   |
| 200               |       | ON   | ON   | ON   | ON   | ON   |
| 205               |       | ON   | ON   | ON   | ON   | ON   |
| 210               | ON    | ON   | ON   | ON   | ON   | ON   |
| 215               | ON    | ON   | ON   | ON   | ON   | ON   |
| 220               | ON    | ON   | ON   | ON   | ON   | ON   |
| 225               | ON    | ON   | ON   | ON   | ON   | ON   |
| 230               | ON    | ON   | ON   | ON   | ON   | ON   |
| 235               | ON    | ON   | ON   | ON   | ON   | ON   |
| 240               | ON    | ON   | ON   | ON   | ON   | ON   |
| 245               | ON    | ON   | ON   | ON   | ON   | ON   |
| 250               | ON    | ON   | ON   | ON   | ON   | ON   |
| 255               | ON    | ON   | ON   | ON   | ON   | ON   |
| 260               | ON    | ON   | ON   | ON   | ON   | ON   |
| 265               | ON    | ON   | ON   | ON   | ON   | ON   |
| 270               | ON    | ON   | ON   | ON   | ON   | ON   |
| 275               | ON    | ON   | ON   | ON   | ON   | ON   |
| 280               | ON    | ON   | ON   | ON   | ON   | ON   |
| 285               | ON    | ON   | ON   | ON   | ON   | ON   |
| 290               | ON    | ON   | ON   | ON   | ON   | ON   |
| 295               | ON    | ON   | ON   | ON   | ON   | ON   |
| 300               | ON    | ON   | ON   | ON   | ON   | ON   |